

**B  
R  
A  
I  
N  
S  
!**

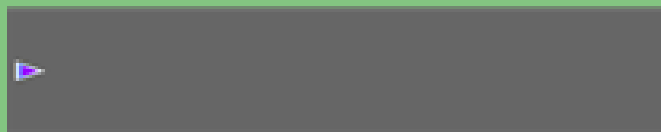
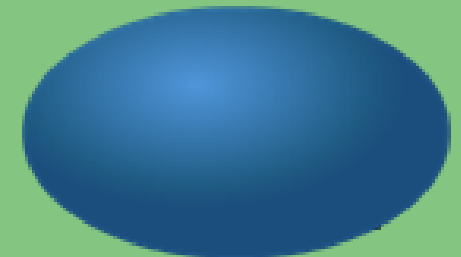
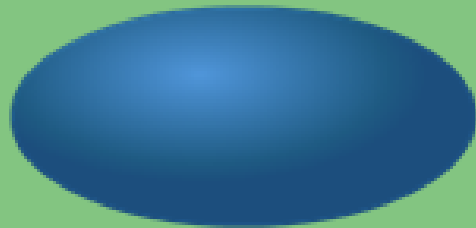
**You all know what a  
"normal"  
brain can do.**

**But,  
What happens  
if a brain is  
NOT  
"normal"?**

**What happens when it becomes  
damaged in some way? Hurt? Injured?**

What words come to mind to describe this boy?

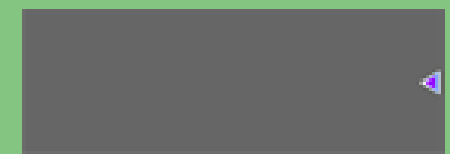
ADORABLE!



1.



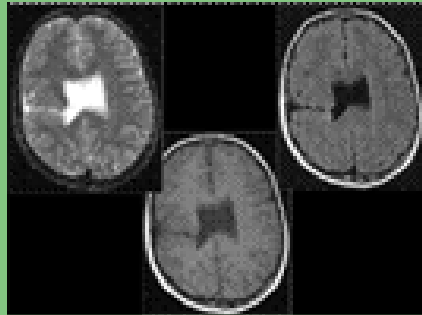
2.



3.

# Schizencephaly

## "cleft brain"



Picture a cinnamon roll: How is a cinnamon roll made?  
Dough is flattened and rolled up.

Well, your brain is made the same way.

**It is a malformation in your cinnamon roll.  
It was made wrong.  
No worries in a cinnamon roll.  
Big problems in a brain.**

**Problems depend on how big and where  
the cleft forms.**

# Cerebral Palsy

"garbage can term"

brain damage causing motor difficulty

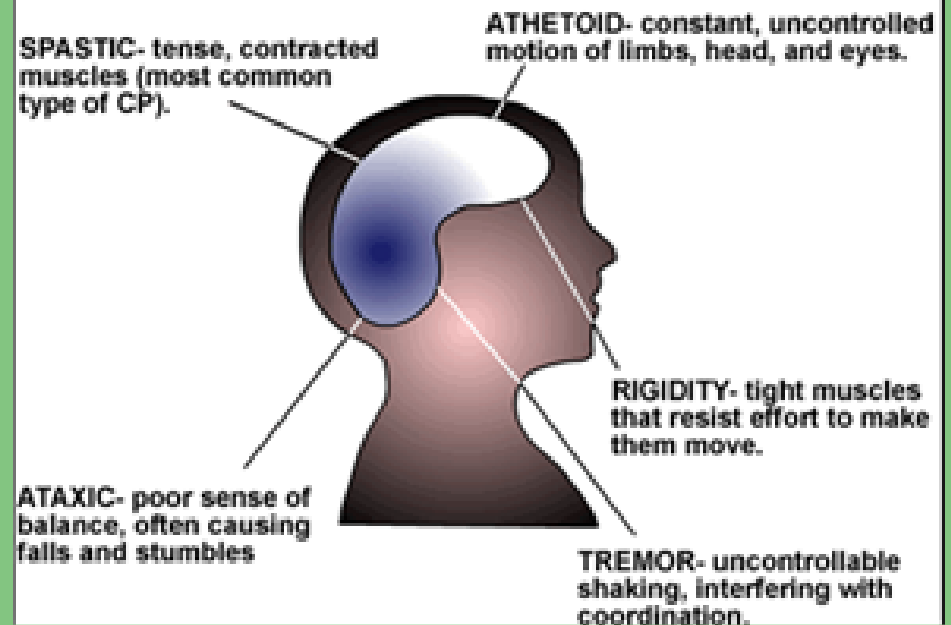


**MOTOR??**  
**WTHeck?**

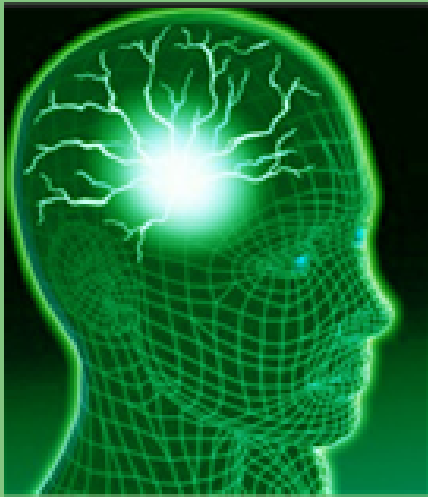
Like a car motor, which helps  
people MOVE,  
when a brain is damaged it doesn't  
move well.

No problem in a car, go get it fixed good  
as new. Big problems in a brain, WHICH  
CAN NEVER, NEVER, NEVER BE FIXED  
GOOD AS NEW

## TYPES OF CEREBRAL PALSY



Difficulties depend on where and how much damage.



# Epilepsy

Brain Signals run amok.



**Seizures: electrical storms in the brain.**  
(Well, not really. But that is what it can be compared to.)

**How?**

Brain signals run on neural pathways. They are the body's electrical wires. If a signal gets interrupted (like a squirrel in the junction box on Laketon Avenue), power goes out, or goes astray.

No problem in a junction box. Remove the squirrel, power is restored.

Big problem in a brain. No way to remove the squirrel, only, hopefully, to control him and hope he doesn't have more babies.