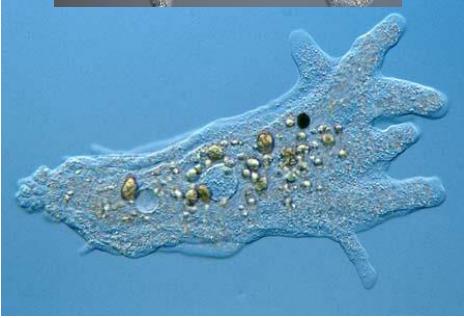
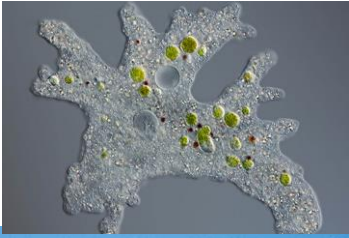


# PONDWATER PROTISTS

## Amoeba

blob, pseudopods



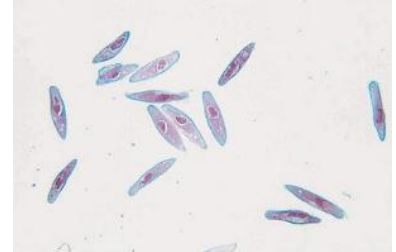
## Euglena

long, green, flagella, red spot



## Paramecium

long "slipper" shape, not green, cilia



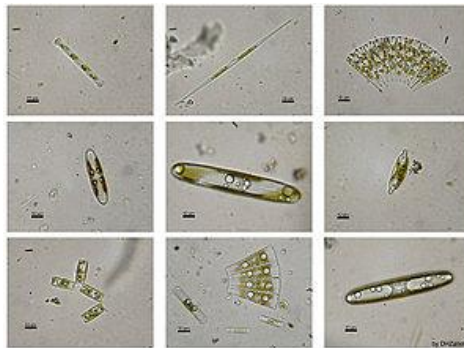
## Volvox

green, round, cilia



## Diatoms

clear, symmetrical, no movement structures



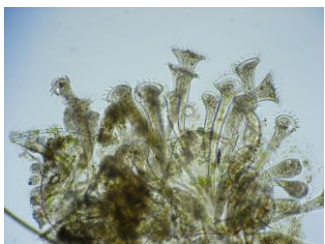
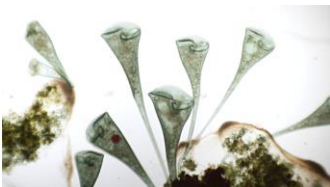
## Rotifer

Attached at one end, cilia around "mouth" at other end



## Stentor

Bell-shaped, attached at one end, cilia around "mouth" at other end, waves back and forth, will quickly contract to "disappear"



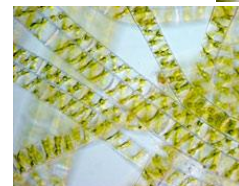
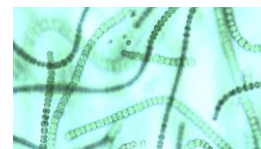
## Vorticella

Wine glass-shaped, attached at one end, cilia around "mouth" at other end, tail makes them spring in and out, often clustered



## Algae

Long green filaments, no movement structures



### Chlamydomonas

Tiny, green, fast, pair of flagella



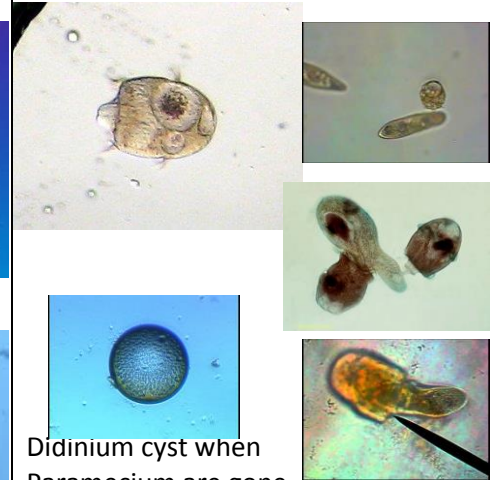
### Blepharisma

cilia



### Didinium

Not green, constantly moving, rings of cilia, spears paramecium



Didinium cyst when Paramecium are gone

### NON-EXAMPLE

#### Copepod

(K. Animalia / P. Crustacea)



### NON-EXAMPLE

#### Hydra

(K. Animalia / P. Cnidaria)



### NON-EXAMPLE

#### Nematodes

(K. Animalia / P. Nematoda)

Unsegmented round worms



### NON-EXAMPLE

#### Fly Larvae

(K. Animalia / P. Arthropoda)

Segmented, bristly



### NON-EXAMPLE

#### Daphnia

(K. Animalia / P. Crustacea)

