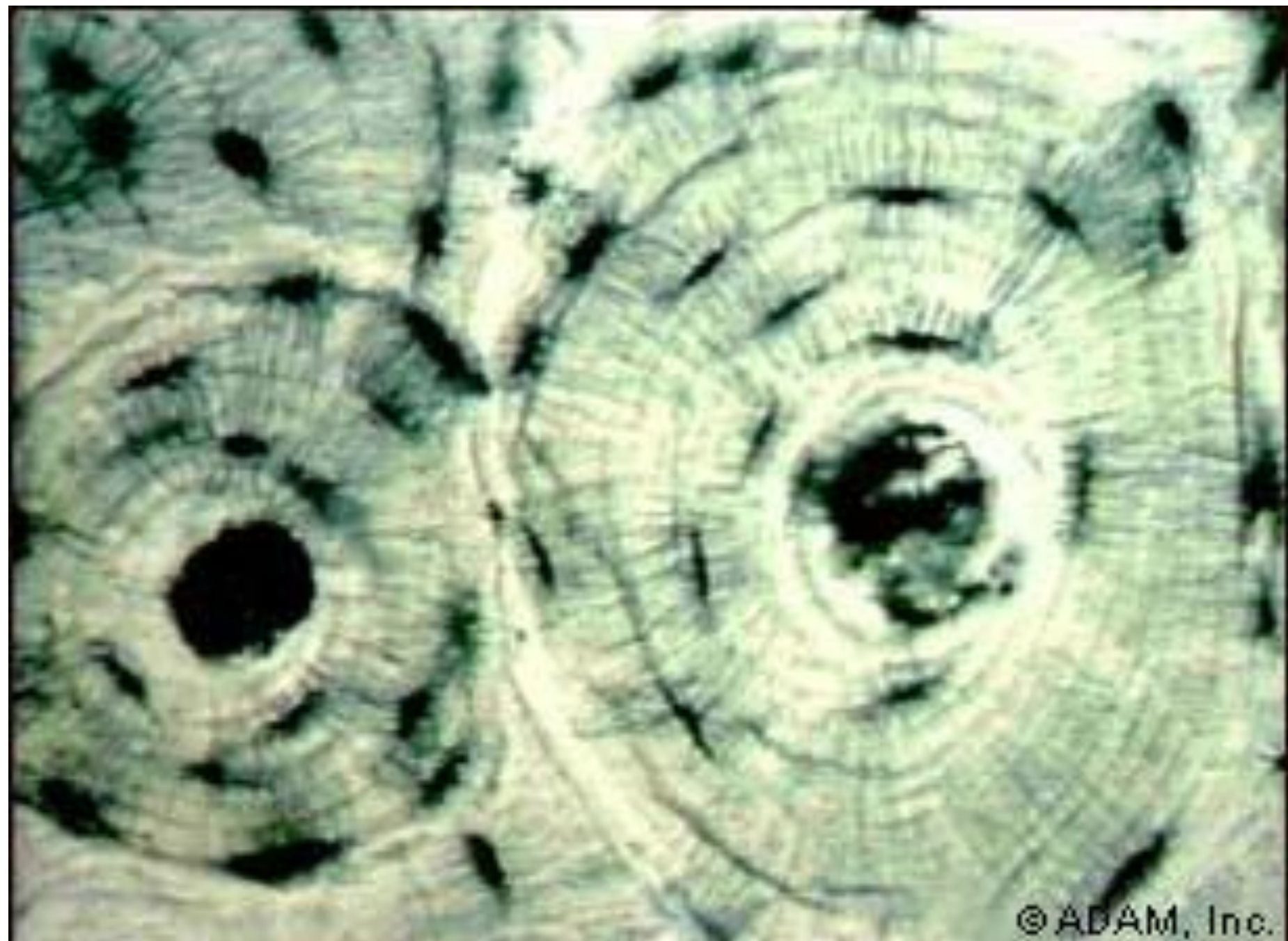
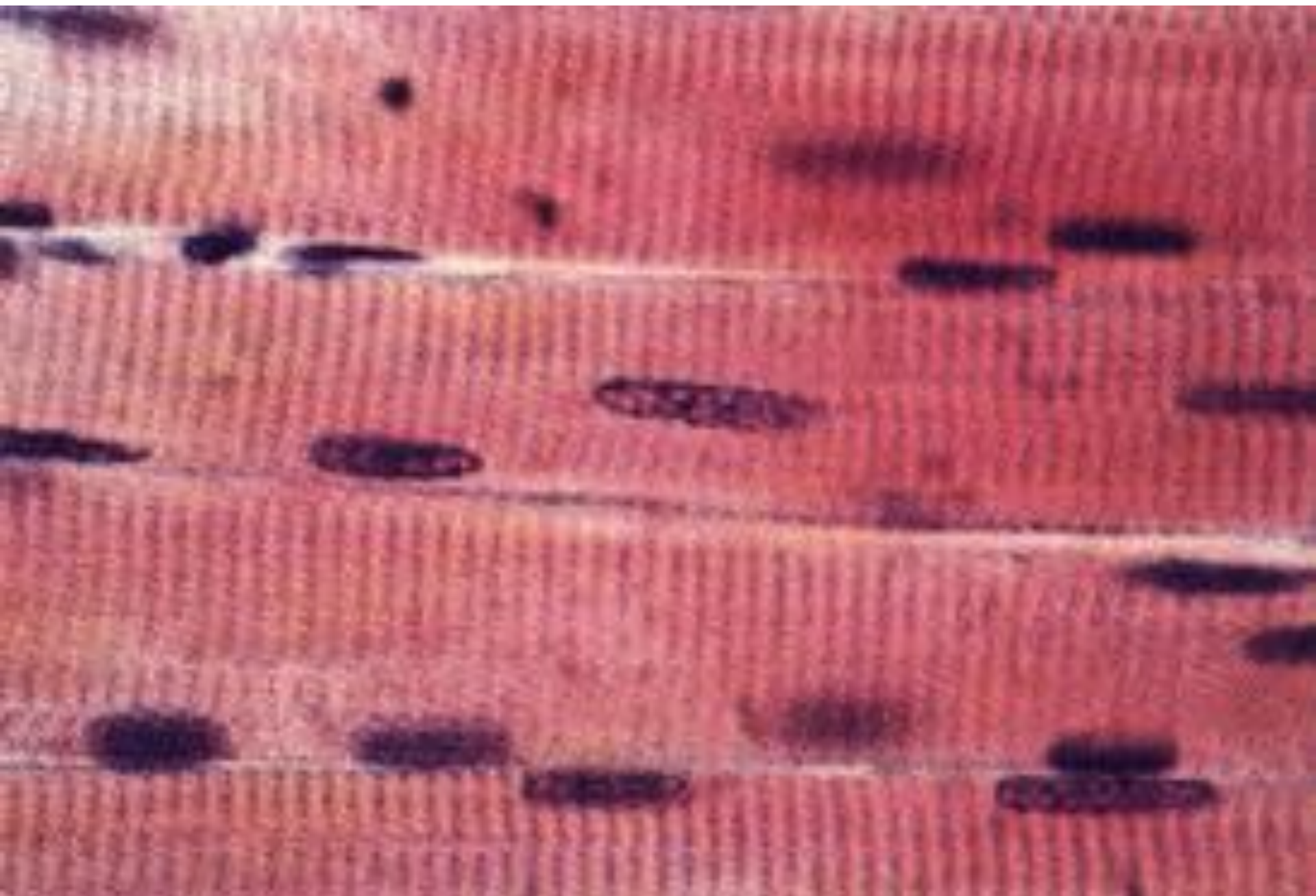


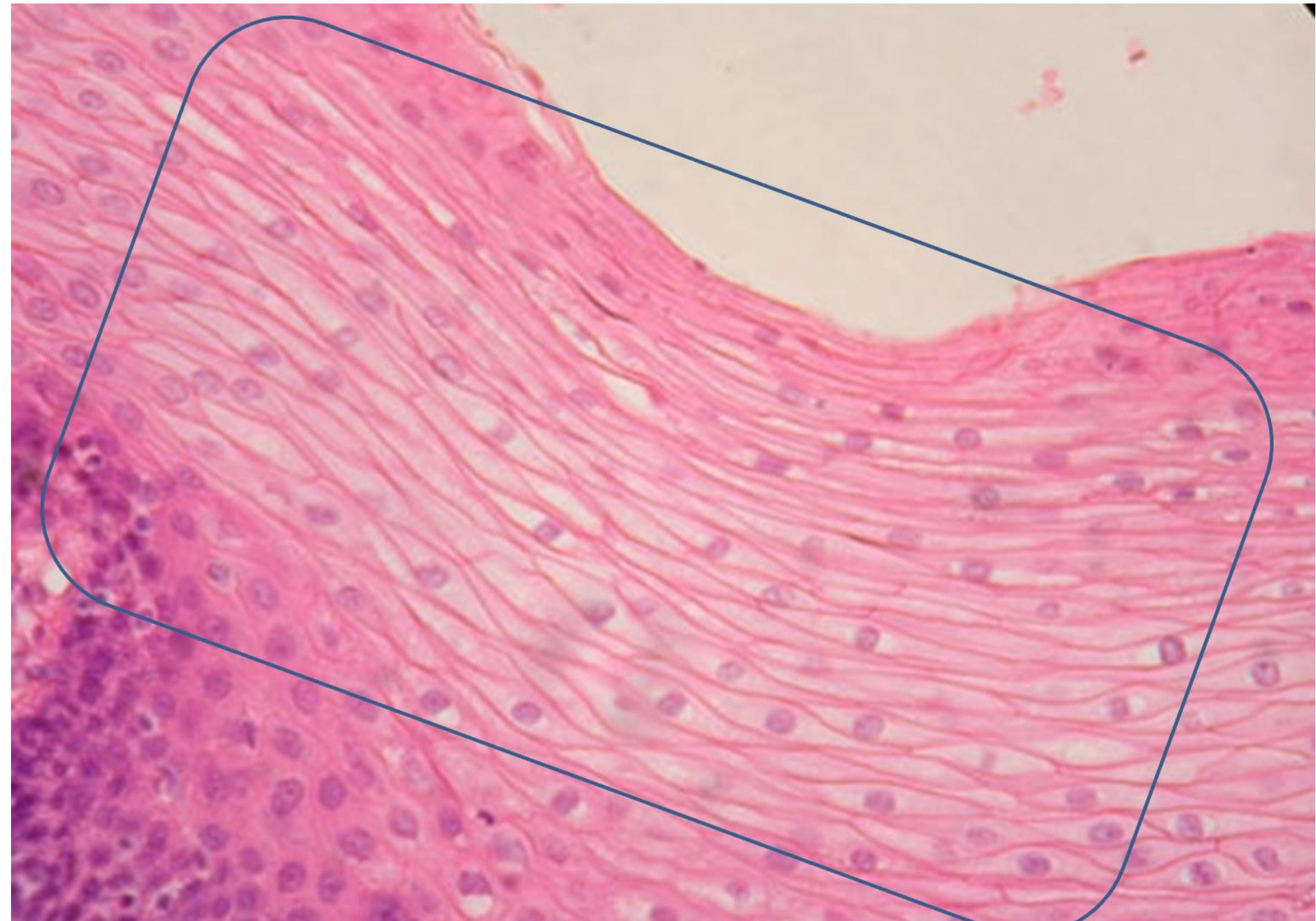
Simple Columnar Epithelium



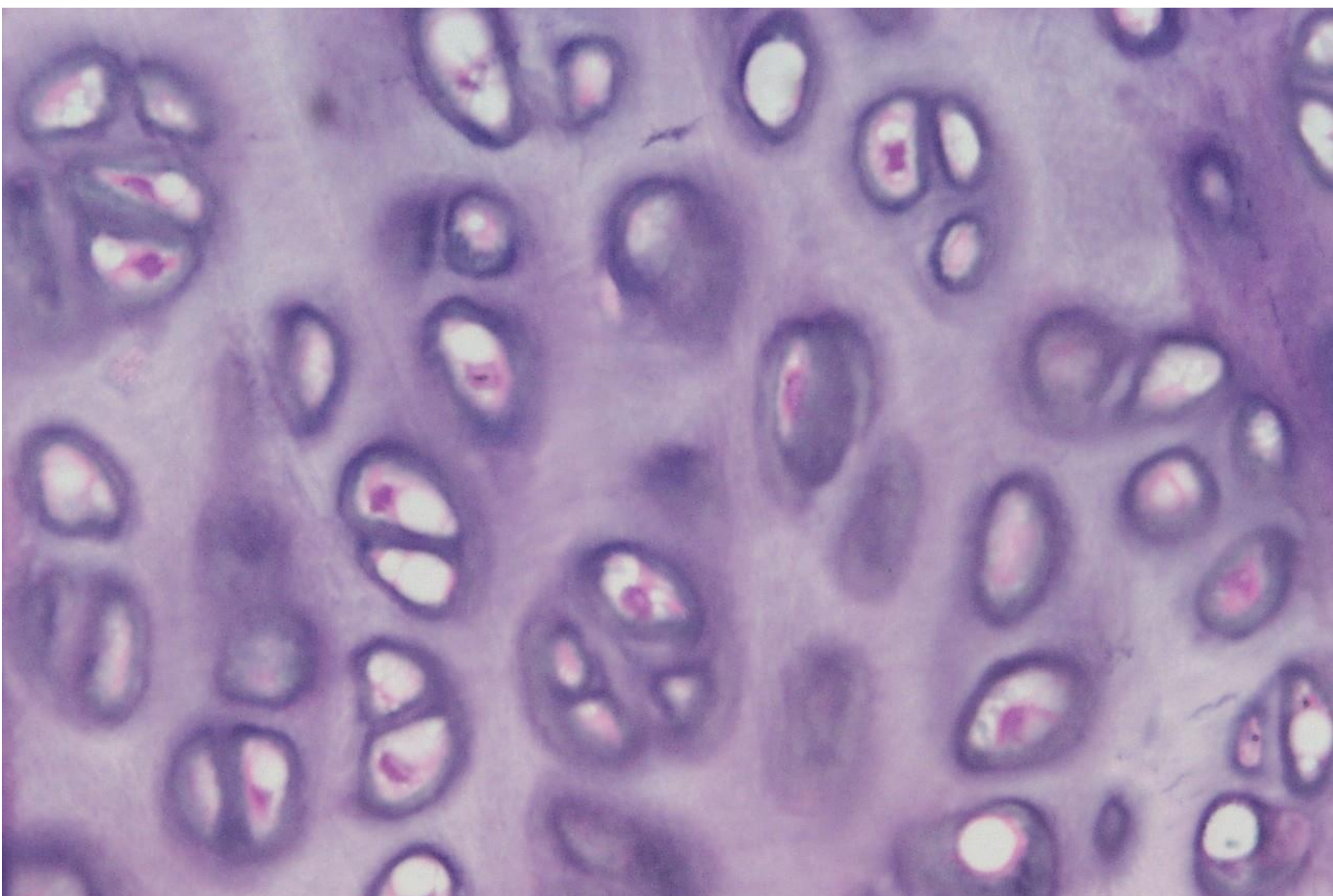
Bone (Connective Tissue)



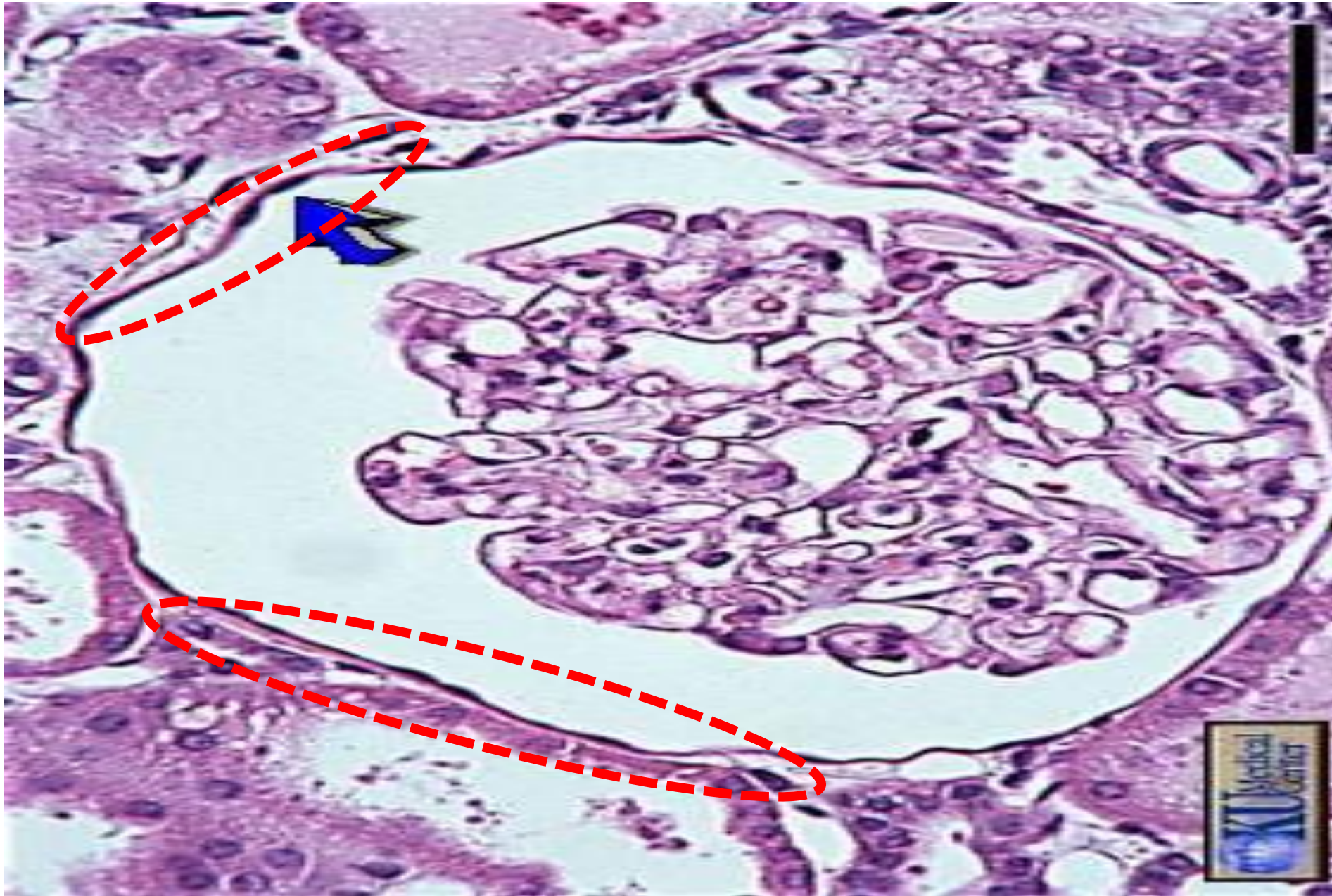
Skeletal Muscle Tissue



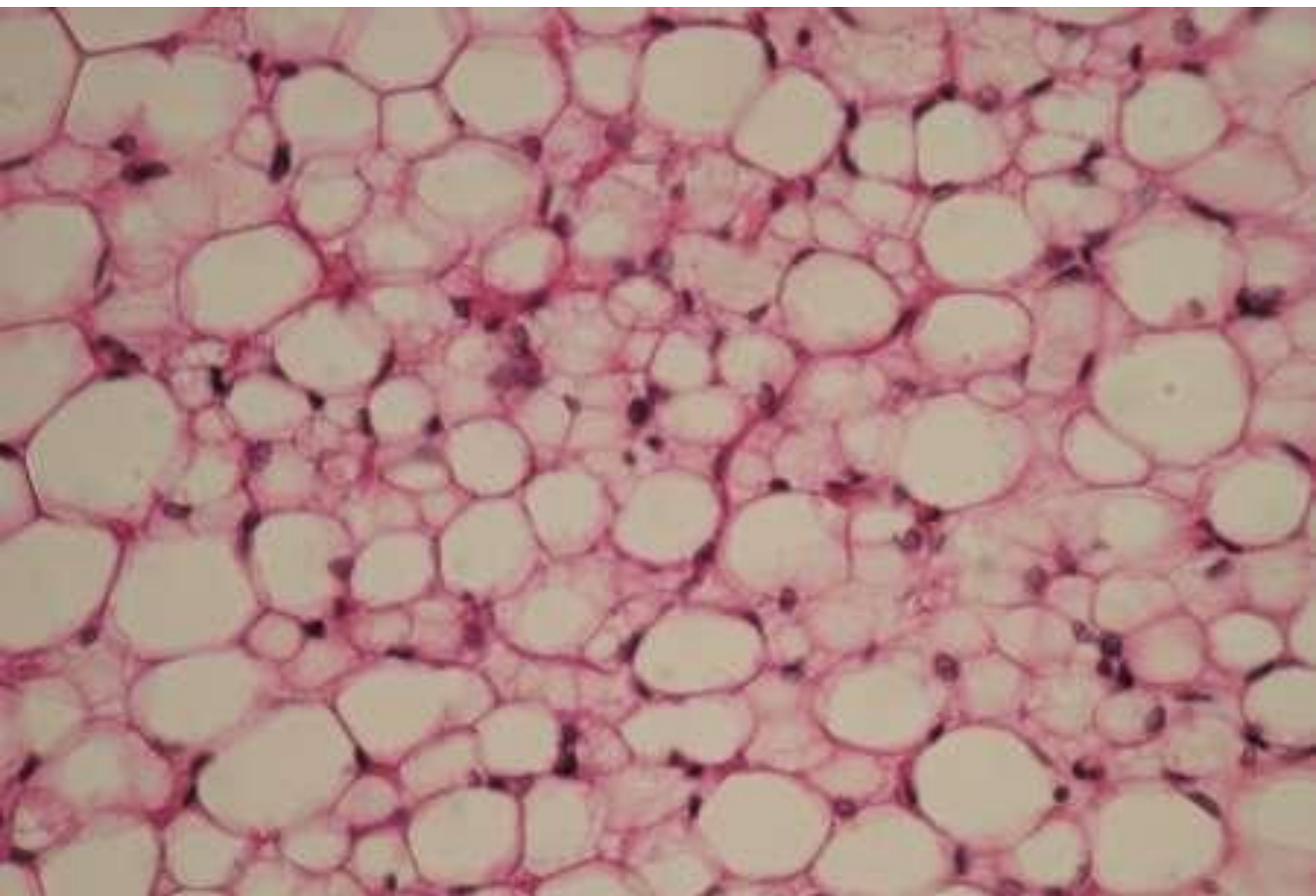
Stratified Squamous Epithelium



Cartilage (Connective Tissue)



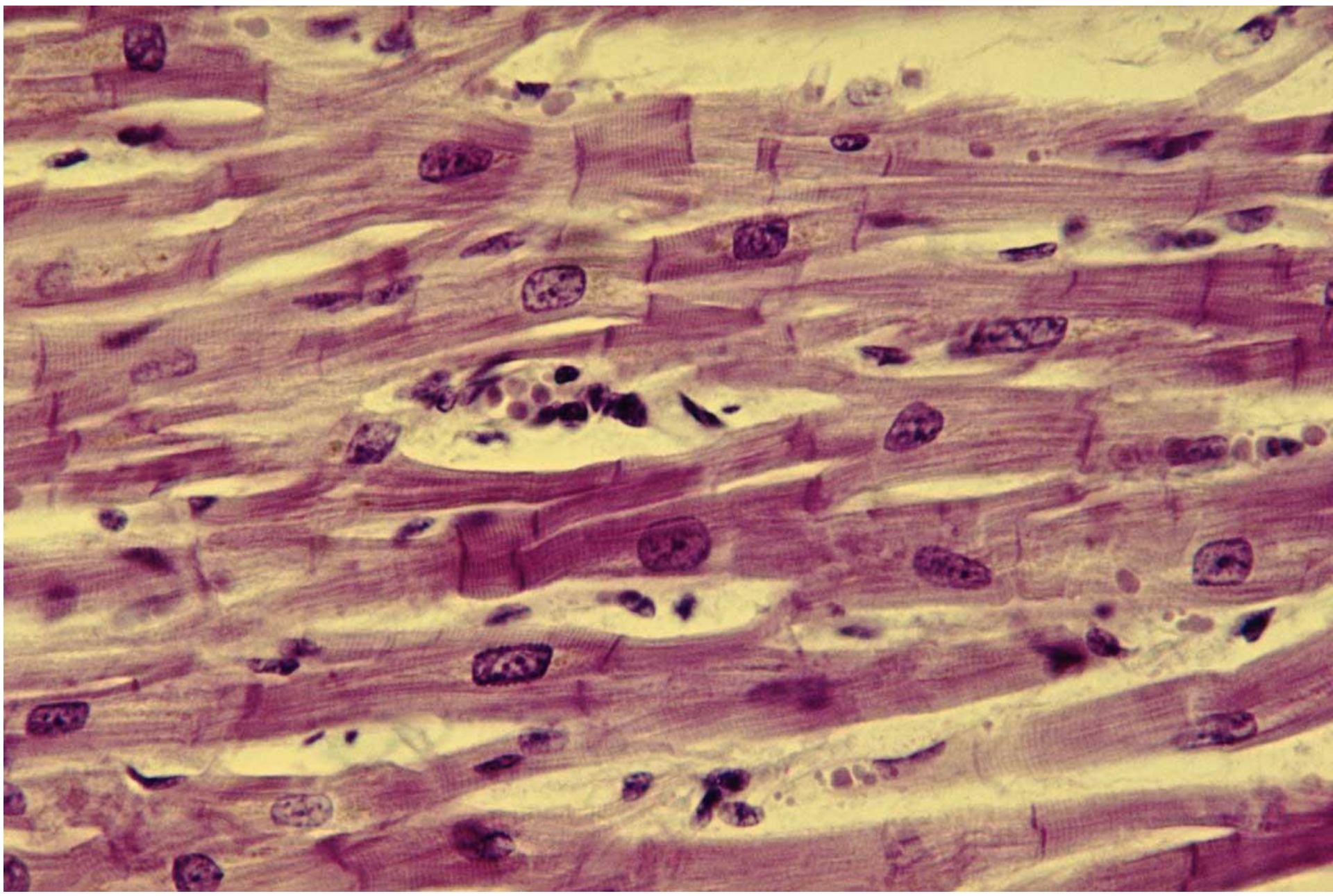
Simple Squamous Epithelium



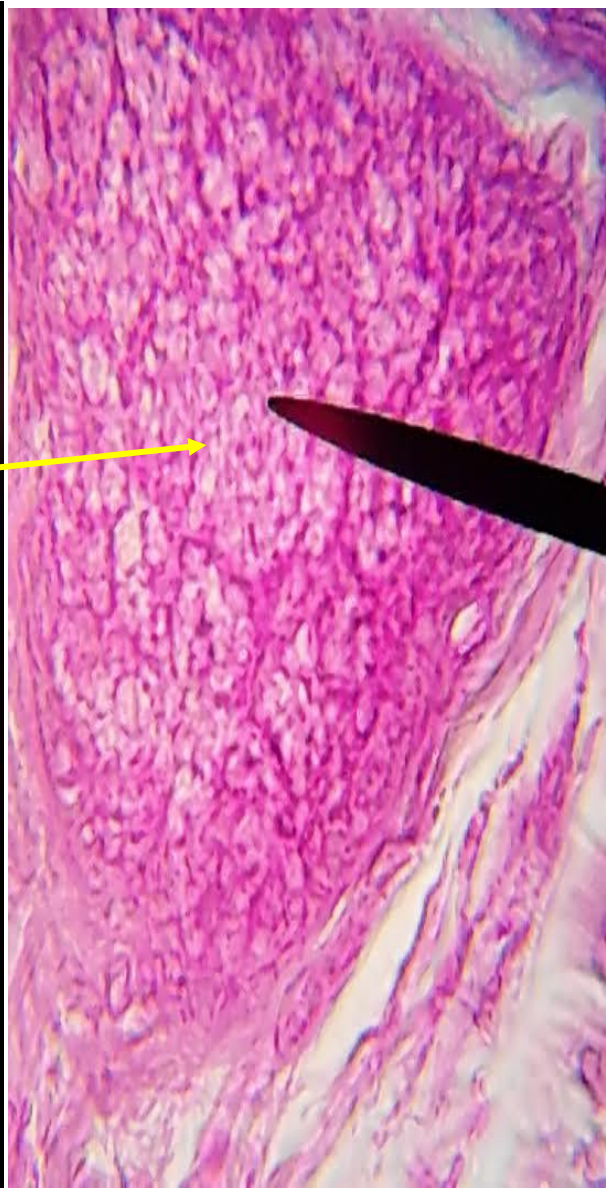
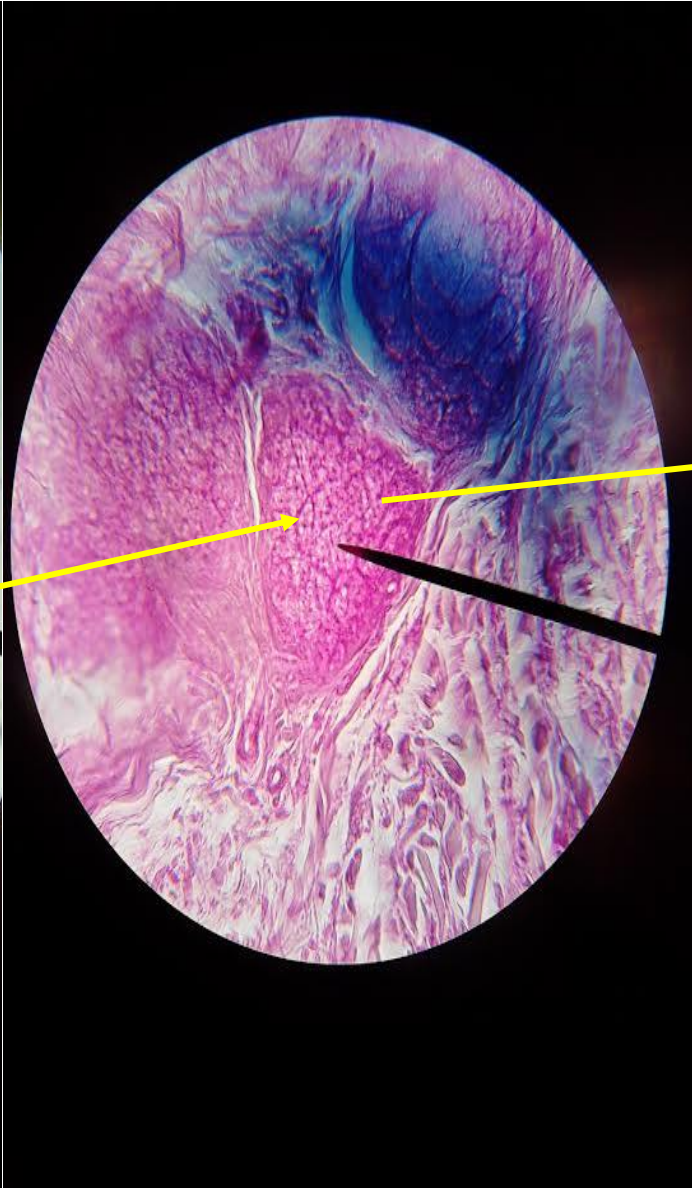
Loose Connective Tissue (Fat)



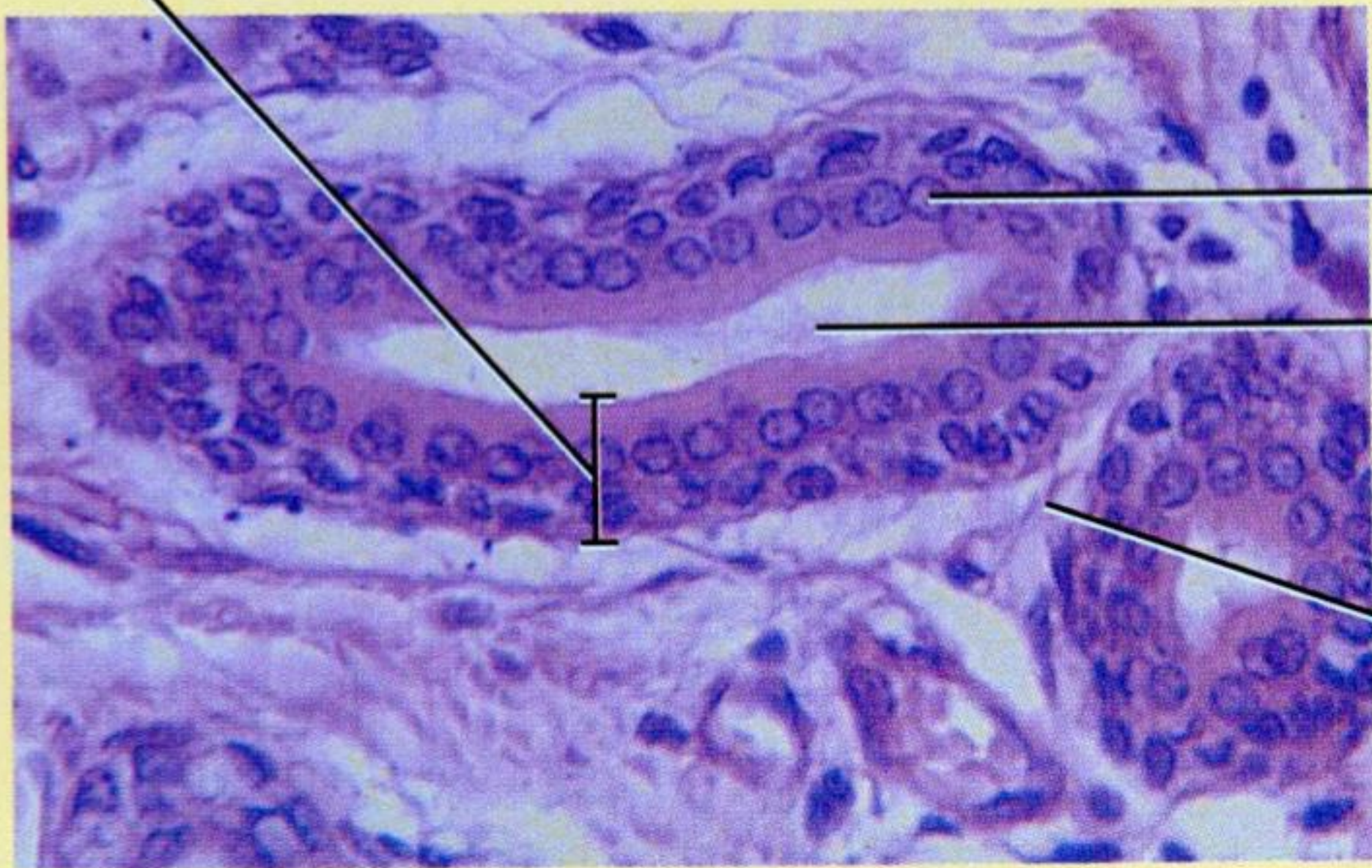
Simple Cuboidal Epithelium



Cardiac Muscle Tissue



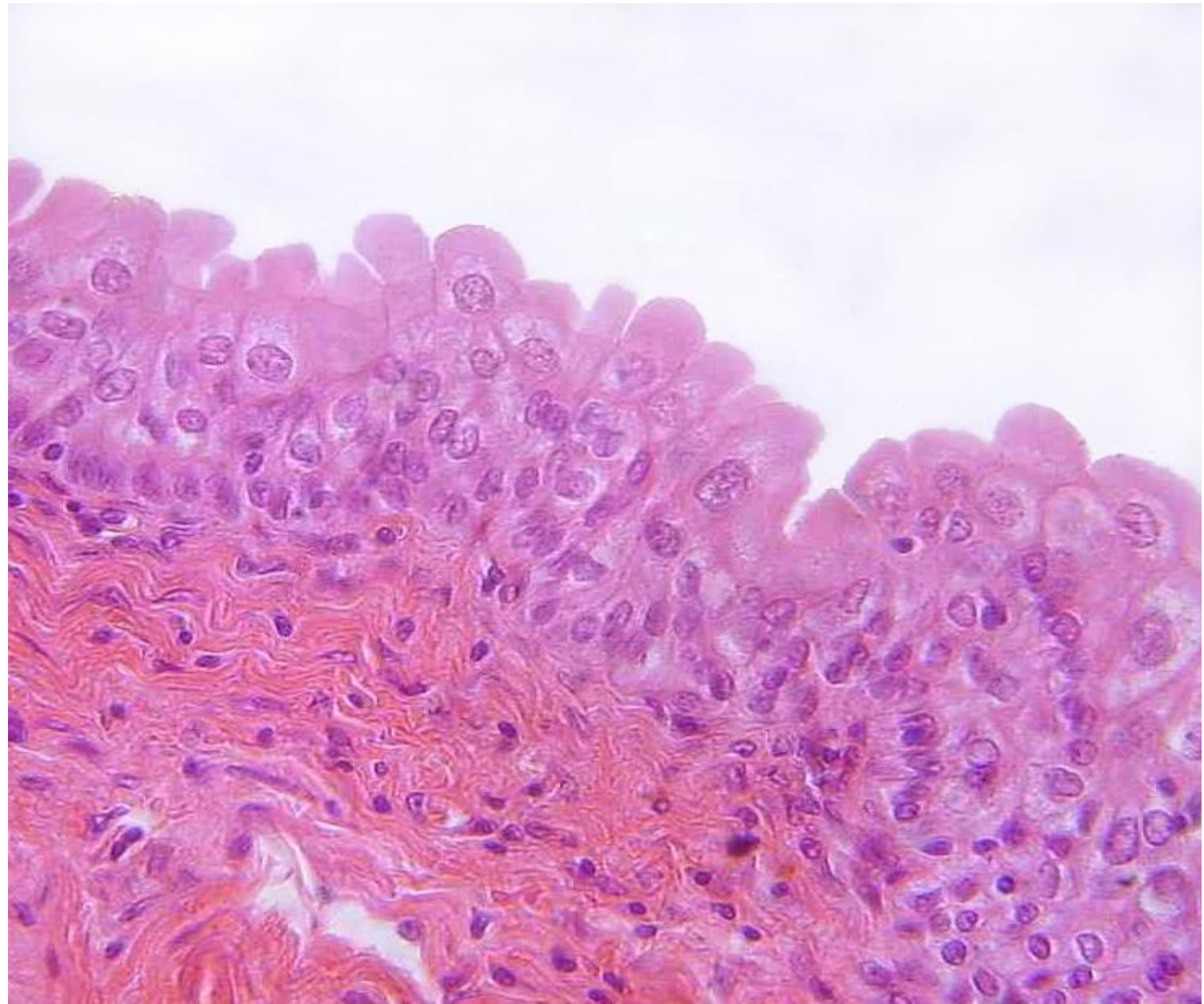
Glandular Epithelium Tissue



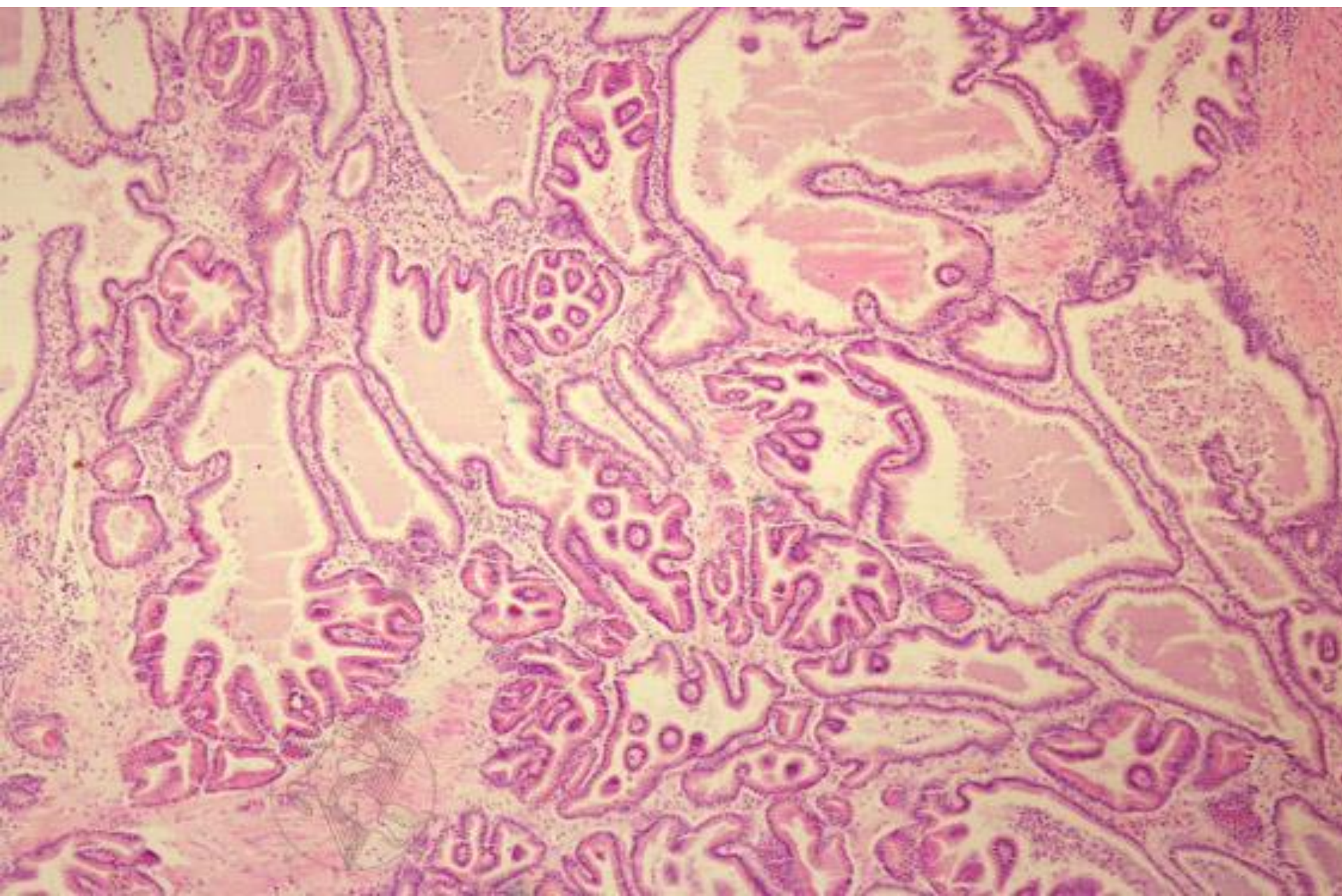
Stratified Cuboidal Epithelium



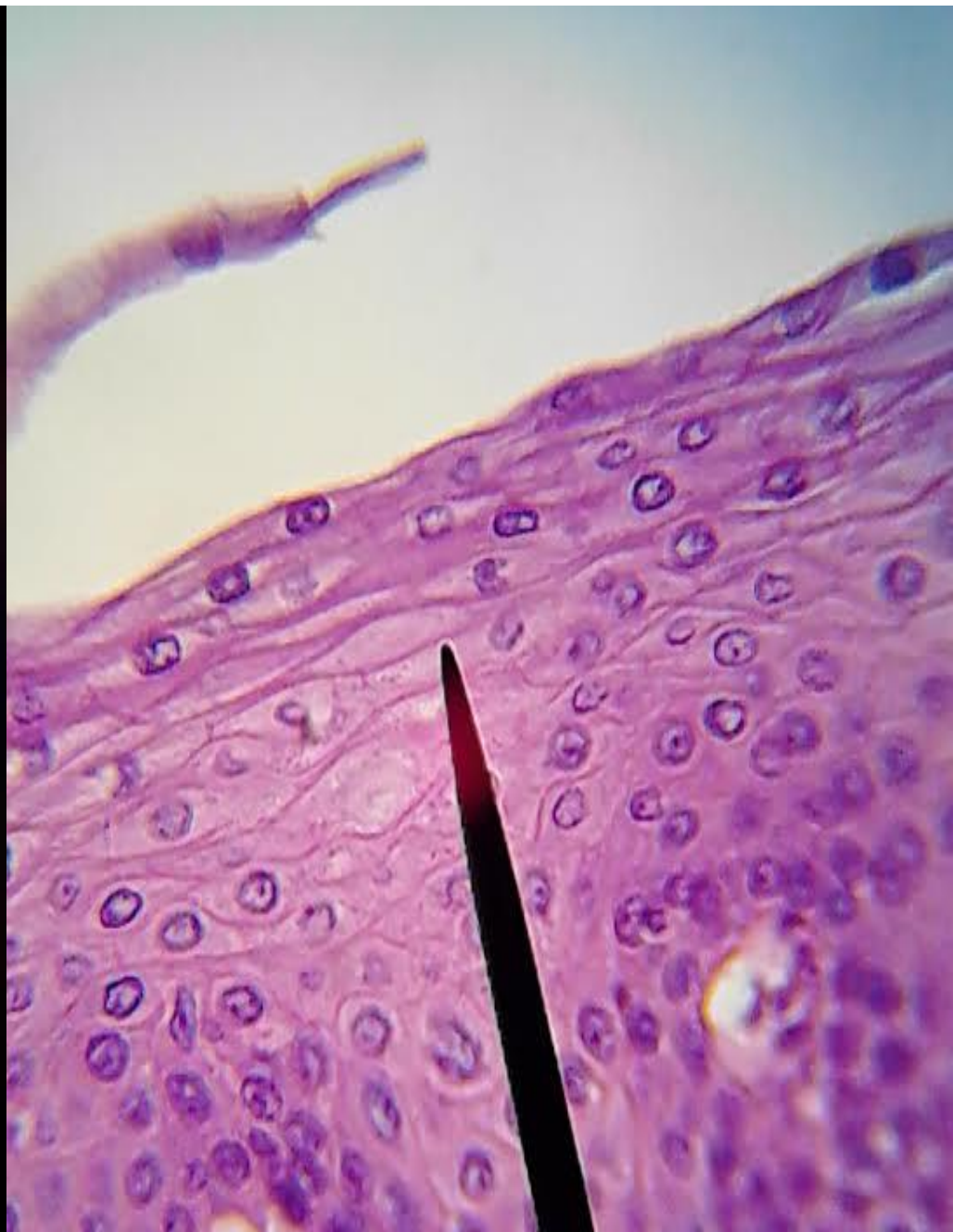
Pseudostratified Columnar Epithelium



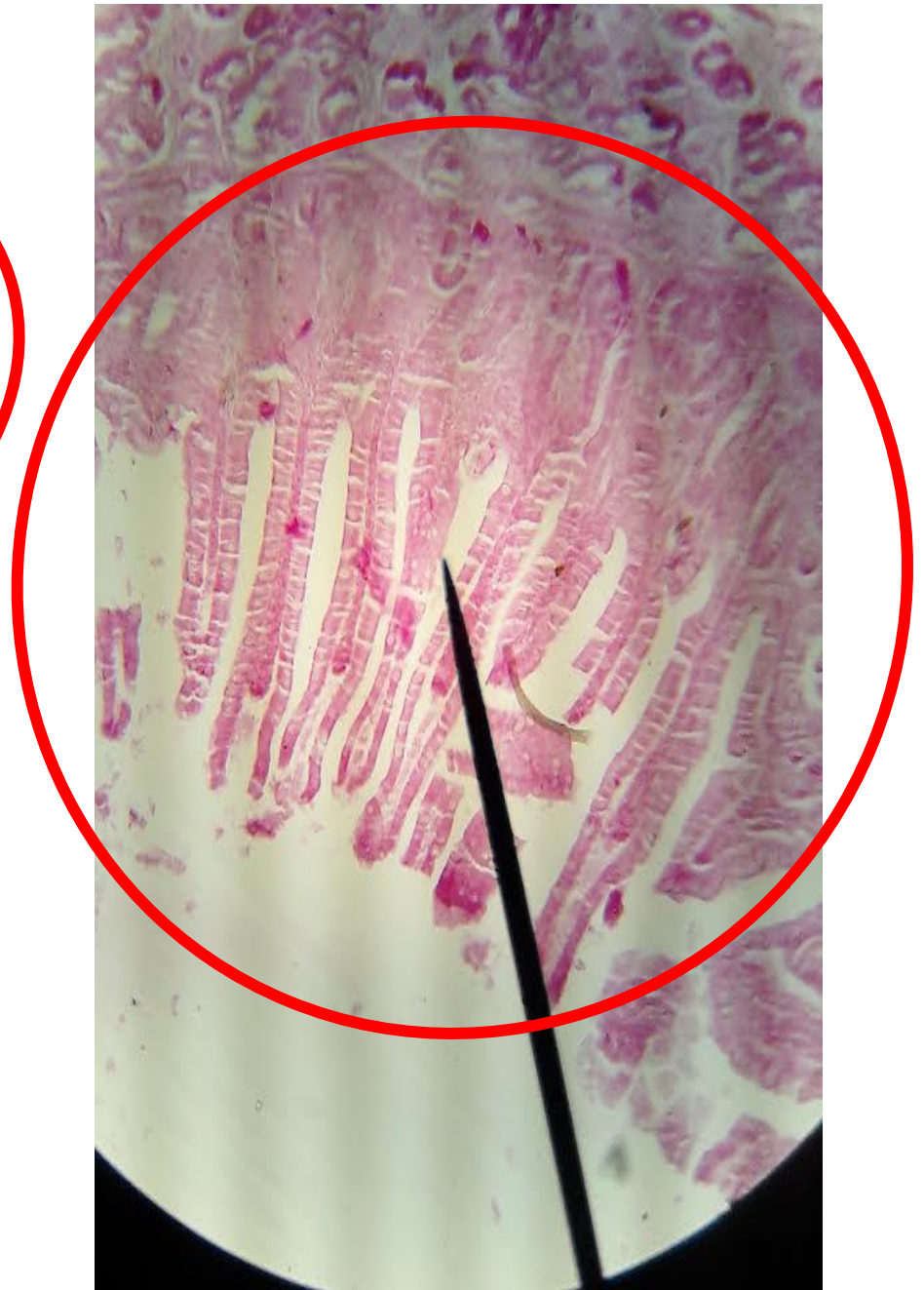
Transitional Epithelium Tissue



Glandular Epithelium Tissue



Stratified Squamous Epithelium



Simple Columnar Epithelium



Transitional Epithelium Tissue